

Seoul 首爾

3-Day / 2-Night Package

Validity: 3Sep-31Dec14

\$2,890^{up}



超值精選

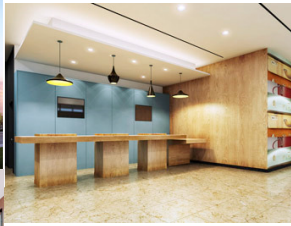
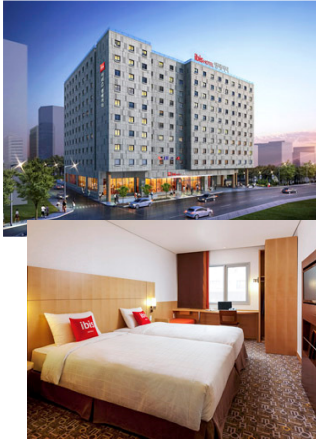
房間即時確認

Ibis Ambassador Seoul Insadong 3*

<http://www.ibis.com/8002>

2013年9月全新開幕

- 位於仁寺洞區, 緊靠購物區、江南和江北的娛樂區和文化區
- 鄰近安國地鐵站及鐘路3街地鐵站, 交通便利
- 簡潔的室內裝修及現代化的家具盡顯優雅的風格



Period of stay	Breakfast	Adult			Child	Extension (per room night)			Public Transport / Location
		Twin Share	Single	Extra Bed	Extra Bed	Twin	Single	Extra Bed	
Till 31Aug14	NO	3,150	3,910	3,080	2,530	820	820	310	Jongno 3-ga Station
1Sep-31Dec14		3,250	4,180	3,080	2,530	960	960	310	

Blackout dates: 3-8Sep14, 24Dec14, 31Dec14

Room Type: (Until 31Aug14) Standard Twin

Room Type: (From 1Sep-31Dec14) Standard Twin/Double



Added Value: (Valid until 31Aug14)

- Late Check out by 14:00
- Free wifi in room and public area
- Hot bath & Fitness centre
- Free shuttle service for Myeongdong, Namdaemun, City Hall, Gwanghwamun Square, Gyeongbok Palace

Value Added: (Valid on 1Sep-31Dec14)

- Access to Gym & Sauna
- In-room Wi-Fi Internet access
- Scheduled shuttle bus service (refer to shuttle information)

Family Offer: (Valid until 31Dec14)

- Child under 12 years old sharing existing bedding with parents without charge (Max.1)

超值精選

Accommodation

Accommodation	Period of stay	Breakfast	Adult			Child	Extension (per room night)			Public Transport / Location	
			Twin Share	Single	Extra Bed	Extra Bed	Twin	Single	Extra Bed		
Nine Tree Hotel Myeong-dong 4* http://www.ninetreehotel.com/	Till 31Aug14	NO	3,340	4,190	3,320	2,770	970	970	430	Myeong-dong Station (明洞南大門)	
	Hotel Surcharge (per room per night): 21-31Aug14 (Fri-Sun) Twin HKD210, Single HKD210										
	1-30Sep14	NO	3,430	4,380	3,320	2,770	1,060	1,060	430		
Acacia 4* http://www.hotelacacia.co.kr/eng/html/wc/index.asp (Double Bed) Blackout dates: 24Dec14, 31Dec14	Till 31Aug14	NO	3,310	4,130	-	-	930	930	-	Euljiro 4-ga Station (東大門)	
	Hotel Surcharge (per room per night): 21-31Aug14 (Fri-Sat) Twin HKD120, Single HKD120										
	1Sep-30Nov14	NO	3,300	4,110	-	-	920	920	-		
Hotel Skypark I 4* http://skyparkhotel.com/eng/html/a/01.asp Blackout dates: 31Aug14	Till 31Aug14	NO	3,290	4,110	-	-	920	920	-	Myeong-dong Station (明洞南大門)	
	Hotel Surcharge (per room per night): 21-30Aug14 (Fri-Sat) Twin HKD190, Single HKD190										
	1-30Sep14	NO	3,410	4,330	3,530	2,980	1,030	1,030	530		
	Hotel Surcharge (per room per night): 1-30Sep14 (Fri-Sat) Twin HKD190, Single HKD190 / 12-14Sep14, 19-22Sep14 Twin HKD640, Single HKD640, Extra Bed HKD30										
	10Oct-30Nov14	NO	3,490	4,490	3,550	3,000	1,110	1,110	540		
	Hotel Surcharge (per room per night): 10Oct-30Nov14 (Fri-Sat) Twin HKD190, Single HKD190 / 10-12Oct14, 31Oct-2Nov14, 21-23Nov14 Twin HKD560, Single HKD560										

Hotel will be renovation from July onward.



Seoul 首爾

3-Day / 2-Night Package

Validity: 3Sep-31Dec14

\$2,890^{up}



送

韓國觀光地圖

◀由韓國觀光公社送出
數量有限, 先到先得▶

超值精選

Accommodation	Period of stay	Breakfast	Adult			Child	Extension (per room night)			Public Transport / Location	
			Twin Share	Single	Extra Bed	Extra Bed	Twin	Single	Extra Bed		
PJ Hotel 5* http://www.hotelpj.co.kr	Till 31Aug14	NO	3,540	4,610	3,130	2,580	1,170	1,170	330	Chungmuro Station (東大門)	
	Hotel Surcharge (per room per night): 21-31Aug14 (Fri-Sat) Twin HKD190, Single HKD190										
	1Sep-30Nov14	NO	3,700	4,910	3,130	2,580	1,320	1,320	330		
Hotel Surcharge (per room per night): 1Sep-30Nov14 (Fri-Sat) Twin HKD100, Single HKD100 / 12-14Sep14, 19-22Sep14, 10-12Oct14, 31Oct-2Nov14, 21-23Nov14 Twin HKD360, Single HKD360											
Ramada Seoul Dongdaemun 4* http://www.ramadadm.com	Till 31Dec14	NO	3,330	4,170	3,550	3,000	950	950	540	Dongdaemun Station (東大門)	
Westin Chosun 5* http://www.echosunhotel.com	Till 31Aug14	NO	4,410	6,330	3,890	3,340	2,030	2,030	710	Euljiro 1-ga Station (明洞6南大門)	
	1-30Sep14		4,560	6,630	3,870	3,320	2,180	2,180	700		
	Hotel Surcharge (per room per night): 12-14Sep14 Twin HKD300, Single HKD300										
	10Oct-30Nov14	NO	4,660	6,830	3,870	3,320	2,280	2,280	700		
Hotel Surcharge (per room per night): 10-12Oct14, 31Oct-2Nov14, 21-23Nov14 Twin HKD200, Single HKD200											
	1-31Dec14	NO	4,610	6,730	-	-	2,230	2,230	-		
Hotel Surcharge (per room per night): 24Dec14, 30-31Dec14 Twin HKD330, Single HKD330											

Accommodation	Period of stay	Breakfast	Adult			Child	Extension (per room night)			Public Transport / Location	
			Twin Share	Single	Extra Bed	Extra Bed	Twin	Single	Extra Bed		
Dongdaemun 東大門											
Amourex 4* http://www.amourexhotel.com/ (Double Bed)	Till 30Sep14, 26Oct-31Dec14	NO	3,010	3,530	3,190	2,640	640	640	370	Wangsimni Station	
	Hotel Surcharge (per room per night): 21Aug-30Sep14, 26Oct-23Dec14, 28-31Dec14 (Fri-Sun) Twin HKD100, Single HKD100 / 24-27Dec14 (Mon-Thu) Twin HKD150, Single HKD150 / 24-27Dec14 (Fri-Sun) Twin HKD240, Single HKD240										
	1-25Oct14	NO	3,020	3,550	-	-	640	640	-		
Hotel Surcharge (per room per night): 1-25Oct14 (Fri-Sat) Twin HKD110, Single HKD110											
Hyundai Residence http://hyundairs.com/ Blackout dates: 24Dec14, 31Dec14	Till 31Aug14	NO	3,080	3,670	2,850	2,300	700	700	190	Euljiro 4-ga Station	
	Hotel Surcharge (per room per night): 21-31Aug14 (Fri-Sat) Twin HKD100, Single HKD100										
	1Sep-30Nov14	NO	3,040	3,590	3,010	2,460	660	660	270		
	Hotel Surcharge (per room per night): 1Sep-30Nov14 (Fri-Sun) Twin HKD170, Single HKD170 / 5-9Sep14, 1-5Oct14, 9-11Oct14, 31Oct-1Nov14, 21-22Nov14 Twin HKD250, Single HKD250										
	1-31Dec14	NO	3,090	3,680	2,840	2,290	710	710	190		
Hotel Surcharge (per room per night): 1-31Dec14 (Fri-Sun) Twin HKD140, Single HKD140 / 19-20Dec14, 25-27Dec14, 29-30Dec14 Twin HKD260, Single HKD260											
Golden Forest Residence http://www.gfresidence.co.kr	Till 31Aug14	NO	3,090	3,710	-	-	720	720	-	Dapsimni Station	
	1Sep-30Nov14	YES	3,090	3,690	-	-	720	720	-		
Uljiro CO'OP Residence http://rent.co-op.co.kr/	Till 31Aug14	NO	3,090	3,750	-	-	740	740	-	Dongdaemun Station	
	Hotel Surcharge (per room per night): 21-31Aug14 (Fri-Sat) Twin HKD90, Single HKD90										
	1Sep-30Nov14	NO	3,110	3,730	-	-	730	730	-		
	Hotel Surcharge (per room per night): 1Sep-30Nov14 (Fri-Sat) Twin HKD90, Single HKD90 / 5-6Sep14, 3-4Oct14, 10-11Oct14 Twin HKD170, Single HKD170										
	1-31Dec14	NO	3,150	3,690	-	-	770	710	-		
Hotel Surcharge (per room per night): 1-31Dec14 (Fri-Sat) Twin HKD100, Single HKD100 / 24Dec14, 31Dec14 Twin HKD210, Single HKD210											



送

韓國觀光地圖

〈由韓國觀光公社送出
數量有限, 先到先得〉

Seoul 首爾

3-Day / 2-Night Package

Validity: 3Sep-31Dec14

\$2,890^{up}

Accommodation	Period of stay	Breakfast	Adult			Child	Extension (per room night)			Public Transport / Location	
			Twin Share	Single	Extra Bed	Extra Bed	Twin	Single	Extra Bed		
Dongdaemun 東大門											
Western CO'OP Residence http://rent.co-op.co.kr/	Till 31Aug14	NO	3,180	3,870	2,850	2,300	800	800	190	Dongdaemun Station	
	Hotel Surcharge (per room per night): 21-31Aug14 (Fri-Sat) Twin HKD100, Single HKD100										
	1Sep-30Nov14	NO	3,170	3,850	2,850	2,300	790	790	190		
	Hotel Surcharge (per room per night): 1Sep-30Nov14 (Fri-Sat) Twin HKD100, Single HKD100 / 5-6Sep14, 3-4Oct14, 10-11Oct14 Twin HKD170, Single HKD170										
Hotel SKYPARK Dongdaemooon I 4* http://skyparkhotel.com/eng/html/a/10.asp 2014年6月全新開幕	Till 30Nov14	NO	3,150	3,810	-	-	770	770	-	Dongdaemun Station	
	Hotel Surcharge (per room per night): 21Aug-30Nov14 (Fri-Sat) Twin HKD190, Single HKD190 / 12-14Sep14, 19-22Sep14, 10-12Oct14, 31Oct-2Nov14, 21-23Nov14 Twin HKD480, Single HKD480										
	Till 31Aug14	NO	5,240	7,980	3,440	2,890	2,860	2,860	490		
			Hotel Surcharge (per room per night): 20-31Aug14 (Fri-Sun) Twin HKD230, Single HKD230								
Value Added: (Valid Until 31Aug14) - WiFi in rooms and public areas - Usage of fitness center and indoor swimming pool											
Itaewon 梨泰院											
Rainbow 3* http://rainbowinseoul.co.kr Blackout dates: 24Dec14, 31Dec14	Till 31Aug14	NO	2,890	3,330	2,690	2,140	530	530	110	Noksapyeong Station	
	Hotel Surcharge (per room per night): 21-31Aug14 (Fri-Sat) Twin HKD50, Single HKD50										
	1Sep-30Nov14	NO	2,900	3,310	2,690	2,140	520	520	110		
	Hotel Surcharge (per room per night): 1Sep-30Nov14 (Fri-Sat) Twin HKD60, Single HKD60										
Hamilton 4* http://www.hamilton.co.kr	Till 31Aug14	NO	3,190	3,910	3,130	2,580	820	820	330	Itaewon Station	
	1Sep-30Nov14		3,130	3,770	-	-	750	750	-		
	1-31Dec14		3,210	3,940	3,140	2,590	840	840	340		
	Hotel Surcharge (per room per night): 22-24Dec14, 31Dec14 Twin HKD270, Single HKD270										
Hotel Capital 4* http://www.hotelcapital.co.kr	Till 31Aug14	NO	3,120	3,750	3,170	2,620	740	740	350	Noksapyeong Station	
	1Sep-31Dec14		3,210	3,930	-	-	830	830	-		
Grand Ambassador Seoul 5* https://grand.ambatel.com/	Till 30Sep14, 1Nov-31Dec14	NO	3,320	4,150	3,470	2,920	940	940	500	Dongguk Univ Station	
	1-31Oct14		3,360	4,230	3,470	2,920	980	980	500		
The Shilla Seoul 5* http://www.shilla.net/en/seoul/index.jsp	Till 31Aug14	NO	5,350	8,210	4,090	3,540	2,970	2,970	810	Dongguk Univ Station	
	1-30Sep14		5,120	7,750	4,050	3,500	2,740	2,740	790		
	Hotel Surcharge (per room per night): 12-14Sep14, 19-22Sep14 Twin HKD670, Single HKD670										
	1Oct-30Nov14	NO	5,310	8,130	4,050	3,500	2,930	2,930	790		
Hotel Surcharge (per room per night): 10-12Oct14, 31Oct-2Nov14, 21-23Nov14 Twin HKD670, Single HKD670											



Seoul 首爾

3-Day / 2-Night Package

Validity: 3Sep-31Dec14

\$2,890^{up}



送

韓國觀光地圖

<由韓國觀光公社送出
數量有限, 先到先得>

Accommodation	Period of stay	Breakfast	Adult			Child	Extension (per room night)			Public Transport / Location	
			Twin Share	Single	Extra Bed	Extra Bed	Twin	Single	Extra Bed		
Gwangjin-gu 廣津區											
Sheraton Grande Walkerhill 5* http://www.sheratonwalkerhill.co.kr/	Till 31Aug14	NO	4,120	5,750	3,510	2,960	1,740	1,740	520	Gwangnaru Station	
	Hotel Surcharge (per room per night): 21-31Aug14 (Fri-Sat) Twin HKD680, Single HKD680 / 19Aug14 Twin HKD970, Single HKD970										
	1Sep-30Nov14	NO	4,280	6,070	3,490	2,940	1,900	1,900	510		
	Hotel Surcharge (per room per night): 1Sep-30Nov14 (Fri-Sat) Twin HKD490, Single HKD490 / 12-14Sep14, 1-5Oct14, 10-12Oct14, 31Oct-2Nov14, 21-23Nov14 Twin HKD950, Single HKD950										
	1-31Dec14	NO	4,140	5,790	-	-	1,760	1,760	-		
Hotel Surcharge (per room per night): 1-31Dec14 (Fri-Sat) Twin HKD680, Single HKD680 / 24Dec14, 31Dec14 Twin HKD980, Single HKD980											
W Seoul Walkerhill 5* http://www.whoel.com/seoul	Till 31Aug14	NO	4,690	6,890	3,510	2,960	2,310	2,310	520	Gwangnaru Station	
	Hotel Surcharge (per room per night): 21-31Aug14 (Fri-Sat) Twin HKD590, Single HKD590										
	1Sep-30Nov14	NO	4,660	6,830	3,490	2,940	2,280	2,280	510		
	Hotel Surcharge (per room per night): 1Sep-30Nov14 (Fri-Sat) Twin HKD570, Single HKD570 / 12-14Sep14, 1-5Oct14, 10-12Oct14, 31Oct-2Nov14, 21-23Nov14 Twin HKD850, Single HKD850										
	1-31Dec14	NO	4,700	6,910	3,550	3,000	2,320	2,320	540		
Hotel Surcharge (per room per night): 1-31Dec14 (Fri-Sat) Twin HKD580, Single HKD580											
Gangnam 江南											
Ibis Ambassador Seoul Gangnam Hotel 3* http://www.accorhotels.com/3730	Till 31Aug14	NO	3,200	3,910	3,070	2,520	820	820	300	Samseong Station	
	Hotel Surcharge (per room per night): 21-31Aug14 (Mon-Thu) Twin HKD370, Single HKD370										
	1Sep-30Nov14	NO	3,190	3,890	3,050	2,500	810	810	290		
Hotel Surcharge (per room per night): 1Sep-30Nov14 (Tue-Thu) Twin HKD360, Single HKD360											
Ramada Seoul 4* http://www.ramadaseoul.co.kr/	-	-	-	-	-	-	-	-	-	Seolleung Station	
Best Western Premier Gangnam 5* http://www.bestwesterngangnam.com/eng/	Till 31Aug14	NO	3,590	4,690	3,130	2,580	1,210	1,210	330	Sinnonhyeon Station	
	1-4Sep14, 11Sep-30Nov14		3,530	4,570	3,110	2,560	1,150	1,150	320		
	5-10Sep14		3,190	3,890	3,110	2,560	810	810	320		
Hotel Riviera 4* http://www.riviera.co.kr/	-	-	-	-	-	-	-	-	-	Samseong Station	
Novotel Ambassador 4* http://www.ambatel.com/gangnam/ Blackout dates: 14-15Aug14	Till 31Aug14	NO	3,500	4,510	3,370	2,820	1,120	1,120	450	Sinnonhyeon Station	
	Hotel Surcharge (per room per night): 21-31Aug14 (Sun-Thu) Twin HKD200, Single HKD200										
	1-14Sep14	NO	3,410	4,410	3,290	2,740	1,070	1,070	410		
	Hotel Surcharge (per room per night): 1-14Sep14 (Mon-Thu) Twin HKD200, Single HKD200										
	15Sep-30Nov14	NO	3,760	5,030	3,320	2,770	1,380	1,380	430		
Hotel Surcharge (per room per night): 15Sep-30Nov14 (Mon-Thu) Twin HKD300, Single HKD300											
Renaissance Seoul Hotel 5* http://www.renaissance-seoul.com/	Till 31Aug14	NO	3,650	4,810	3,510	2,960	1,270	1,270	520	Yeoksam Station	
	Hotel Surcharge (per room per night): 21-31Aug14 (Mon-Thu) Twin HKD300, Single HKD300										
	1Sep-30Nov14	NO	4,110	5,730	3,400	2,850	1,740	1,740	470		
	Hotel Surcharge (per room per night): 1Sep-30Nov14 (Mon-Thu) Twin HKD220, Single HKD220										
	1-31Dec14	NO	3,920	5,350	3,400	2,850	1,540	1,540	470		
Hotel Surcharge (per room per night): 1-31Dec14 (Mon-Thu) & 26-28Dec14 Twin HKD220, Single HKD220 / 24Dec14, 31Dec14 Twin HKD1290, Single HKD1290 / 25Dec14, 29-30Dec14 Twin HKD410, Single HKD410, Triple HKD410											
Coex InterContinental 5* http://www.seoul.intercontinental.com/	Till 31Aug14	NO	3,740	4,990	3,710	3,160	1,360	1,360	620	Samseong Station	
	1-30Sep14, 1-30Nov14		3,910	5,330	3,670	3,120	1,530	1,530	600		
	1-31Oct14		4,000	5,510	3,670	3,120	1,620	1,620	600		



Seoul 首爾

3-Day / 2-Night Package

Validity: 3Sep-31Dec14

\$2,890^{up}



送

韓國觀光地圖

<由韓國觀光公社送出
數量有限, 先到先得>

Accommodation	Period of stay	Breakfast	Adult			Child	Extension (per room night)			Public Transport / Location		
			Twin Share	Single	Extra Bed	Extra Bed	Twin	Single	Extra Bed			
Gangnam 江南												
Grand InterContinental Seoul 5* http://www.seoul.intercontinental.com/	Till 31Aug14		3,910	5,370	3,710	3,160	1,550	1,550	620	Samseong Station		
	1-30Sep14, 1-30Nov14	NO	4,000	5,510	3,670	3,120	1,620	1,620	600			
	1-31Oct14		4,100	5,710	3,670	3,120	1,720	1,720	600			
The Ritz-Carlton Seoul 5* http://www.ritzcarlton.com/	Till 31Aug14		3,770	5,050	3,550	3,000	1,390	1,390	540	Sinnonghyeon Station		
	1-30Sep14	NO	3,900	5,330	3,500	2,950	1,530	1,530	520			
			Hotel Surcharge (per room per night): 2-4Sep14 Twin HKD220, Single HKD220, Triple HKD220 / 16-18Sep14, 22-25Sep14, 30Sep14 Twin HKD610, Single HKD610									
	10Oct-30Nov14	NO	4,300	6,110	3,640	3,090	1,920	1,920	590			
Hotel Surcharge (per room per night): 10Oct-30Nov14 (Mon-Thu) Twin HKD220, Single HKD220												
JW Marriott Hotel Seoul 5* http://www.jw-marriott.co.kr/	Till 31Aug14	NO	4,030	5,570	3,410	2,860	1,650	1,650	470	Express Bus Terminal Station		
Lotte World Hotel 5* http://www.lottehotelworld.com	Till 31Aug14		4,310	6,130	3,510	2,960	1,930	1,930	520	Jamsil Station		
	1-10Sep14	NO	3,910	5,330	3,490	2,940	1,530	1,530	510			
			Hotel Surcharge (per room per night): 1-10Sep14 (Fri-Sat) Twin HKD110, Single HKD110									
	11Sep-30Nov14	NO	4,000	5,510	3,490	2,940	1,620	1,620	510			
Hotel Surcharge (per room per night): 11Sep-30Nov14 (Fri-Sat) Twin HKD120, Single HKD120												
Park Hyatt 5* http://seoul.park.hyatt.com (Double Bed)	1-30Sep14	NO	5,900	9,310	3,050	2,500	3,520	3,520	290	Samseong Station		
Jongno 鐘路												
Seven Street Seoul5* (formerly Sutton Hotel Seoul) http://sutton.co.kr/	Till 31Aug14	NO	3,180	3,870	3,010	2,460	800	800	270	Euljiro 3-ga Station		
			Hotel Surcharge (per room per night): 21-31Aug14 (Fri-Sat) Twin HKD210, Single HKD210									
	1-30Sep14	NO	3,210	3,930	3,010	2,460	830	830	270			
Hotel Surcharge (per room per night): 1-30Sep14 (Fri-Sat) Twin HKD170, Single HKD170												
Ramada Seoul Jongno 4* 2013年12月全新開幕	Till 31Dec14	NO	3,140	3,790	3,550	3,000	760	760	540	Euljiro 5-ga Station		
Aventree Hotel Jongno 5* http://www.aventreehotel.com	Till 31Aug14	NO	3,310	4,130	-	-	940	940	-	Jonggak Station		
			Hotel Surcharge (per room per night): 21-31Aug14 (Fri-Sun) Twin HKD190, Single HKD190									
	1Sep-30Nov14	NO	3,280	4,070	-	-	900	900	-			
Hotel Surcharge (per room per night): 1Sep-30Nov14 (Fri-Sat) Twin HKD190, Single HKD190 / 12-14Sep14, 19-21Sep14, 1-4Oct14, 10-12Oct14, 31Oct-2Nov14, 21-23Nov14 Twin HKD440, Single HKD440												
Center Mark Hotel 5* http://www.CenterMarkhotel.com	Till 31Aug14	NO	3,320	4,150	3,130	2,580	940	940	330	Jonggak Station		
			Hotel Surcharge (per room per night): 21-31Aug14 (Fri-Sat) Twin HKD110, Single HKD110									
	1-30Sep14	NO	3,360	4,230	3,050	2,500	980	980	290			
			Hotel Surcharge (per room per night): 1-30Sep14 (Fri-Sat) Twin HKD190, Single HKD190 / 12-14Sep14, 20-21Sep14 Twin HKD360, Single HKD360									
	10Oct-30Nov14	NO	3,460	4,430	-	-	1,090	1,090	-			
Hotel Surcharge (per room per night): 10Oct-30Nov14 (Fri-Sat) Twin HKD210, Single HKD210												



Seoul 首爾

3-Day / 2-Night Package

Validity: 3Sep-31Dec14

\$2,890^{up}



送

韓國觀光地圖

〈由韓國觀光公社送出
數量有限, 先到先得〉

Accommodation	Period of stay	Breakfast	Adult			Child	Extension (per room night)			Public Transport / Location
			Twin Share	Single	Extra Bed	Extra Bed	Twin	Single	Extra Bed	
Myeong Dong & Namdaemun Market 明洞&南大門										
Irene City Hotel 3* http://www.hotelirene.co.kr/irenecity.html (Double Bed)	Till 30Sep14	NO	3,060	3,620	3,040	2,490	680	680	290	City Hall Station
Hotel Surcharge (per room per night): 21Aug-30Sep14 (Fri-Sun) Twin HKD110, Single HKD110 / 12-14Sep14 Twin HKD280, Single HKD280										
Robero Myeondong 4* (formerly Seven Street MyeongDong & Sutton Myeong Dong) http://sutton.co.kr/	Till 31Aug14	NO	3,190	3,950	3,010	2,460	840	840	270	Euljiro 3-ga Station
Hotel Surcharge (per room per night): 20-31Aug14 (Fri-Sat) Twin HKD170, Single HKD170										
	1Sep-30Nov14	NO	3,280	4,070	3,010	2,460	900	900	270	Euljiro 3-ga Station
Hotel Surcharge (per room per night): 1Sep-30Nov14 (Fri-Sat) Twin HKD180, Single HKD180 / 13-14Sep14, 19-20Sep14, 1-5Oct14, 11-12Oct14, 1-3Nov14 Twin HKD330, Single HKD330										
Ramada Hotel and Suites Namdaemun 4* http://www.ramada.com	Till 31Dec14	NO	3,210	3,930	3,550	3,000	830	830	540	Seoul Station
Irene Hotel 4* http://www.hotelirene.co.kr/en	Till 30Sep14	NO	3,230	3,960	3,040	2,490	850	850	290	City Hall Station
Hotel Surcharge (per room per night): 21Aug-30Sep14 (Fri-Sun) Twin HKD150, Single HKD150 / 12-14Sep14 Twin HKD280, Single HKD280, Extra Bed HKD110										
Hotel Manu 3* http://www.hotelmanu.com/	Till 31Aug14	YES	3,160	3,840	-	-	790	790	-	Seoul Station
	1Sep-31Dec14	NO	3,240	3,990	-	-	860	860	-	Seoul Station
Hotel Surcharge (per room per night): 1Sep-31Dec14 (Fri-Sat) Twin HKD110, Single HKD110										
Seoul Royal Hotel 5* http://www.seoulroyal.co.kr/	Till 31Aug14	NO	3,720	4,950	3,510	2,960	1,340	1,340	520	Euljiro 1-ga Station
Hotel Surcharge (per room per night): 21-31Aug14 (Fri-Sat) Twin HKD190, Single HKD190										
Sejong Hotel 5* http://www.sejong.co.kr/	Till 31Aug14	NO	3,530	4,570	3,650	3,100	1,150	1,150	590	Myeong-dong Station
Hotel Surcharge (per room per night): 20-31Aug14 (Fri-Sat) Twin HKD250, Single HKD250										
	1Sep-30Nov14	NO	3,670	4,850	3,630	3,080	1,290	1,290	580	Myeong-dong Station
Hotel Surcharge (per room per night): 1Sep-30Nov14 (Fri-Sat) Twin HKD250, Single HKD250 / 12-14Sep14, 19-22Sep14, 10-12Oct14, 31Oct-2Nov14, 21-23Nov14 Twin HKD790, Single HKD790										
Hotel Rex 4* http://hotelrex.co.kr/hm/tour_e.htm	Till 31Aug14	NO	3,120	3,750	3,370	2,820	740	740	450	Hoehyeon Station
Hotel Surcharge (per room per night): 21-31Aug14 (Fri-Sat) Twin HKD120, Single HKD120										
J Hill Hotel 3* http://jhill.kr/kor/main/main.asp	Till 30Jun14	NO	-	-	-	-	-	-	-	Myeong-dong Station
Savoy Hotel Seoul 4* http://www.savoyhotel.co.kr/html/kor/wc/	Till 31Aug14	NO	3,370	4,250	3,130	2,580	990	990	330	Myeong-dong Station
Hotel Surcharge (per room per night): 21-31Aug14 (Fri-Sat) Twin HKD200, Single HKD200										
	1Sep-30Nov14	NO	3,450	4,410	3,110	2,560	1,070	1,070	320	Myeong-dong Station
Hotel Surcharge (per room per night): 1Sep-30Nov14 (Fri-Sat) Twin HKD200, Single HKD200 / 12-14Sep14, 19-22Sep14, 10-12Oct14, 31Oct-2Nov14, 21-23Nov14 Twin HKD430, Single HKD430										
President Hotel Seoul 5* http://www.hotelpresident.co.kr	Till 31Aug14	NO	3,370	4,250	3,410	2,860	990	990	470	Euljiro 1-ga Station
Pacific Hotel 5* http://www.thepacifichotel.co.kr/	Till 31Aug14	NO	3,370	4,250	3,410	2,860	990	990	470	Myeong-dong Station
Hotel Surcharge (per room per night): 21-31Aug14 (Fri-Sat) Twin HKD110, Single HKD110										

Seoul 首爾

3-Day / 2-Night Package

Validity: 3Sep-31Dec14

\$2,890^{up}



送

韓國觀光地圖

〈由韓國觀光公社送出
數量有限, 先到先得〉

2013年10月
全新開幕

Myeong Dong & Namdaemun Market 明洞&南大門

Accommodation	Period of stay	Breakfast	Adult			Child	Extension (per room night)			Public Transport / Location	
			Twin Share	Single	Extra Bed	Extra Bed	Twin	Single	Extra Bed		
Myeong Dong & Namdaemun Market 明洞&南大門											
Tmark Hotel Myeong Dong 4* http://www.tmarkhotel.com	Till 31Aug14	NO	3,320	4,150	2,870	2,320	940	940	200	Chungmuro Station	
	Hotel Surcharge (per room per night): 21-31Aug14 (Fri-Sat) Twin HKD190, Single HKD190										
	1Sep-30Nov14	NO	3,440	4,380	3,040	2,490	1,060	1,060	290	Chungmuro Station	
	Hotel Surcharge (per room per night): 1Sep-30Nov14 (Fri-Sat) Twin HKD190, Single HKD190 / 13-145Sep14, 20-21Sep14, 11-12Oct14, 1-2Nov14, 22-23Nov14 Twin HKD410, Single HKD410										
Hotel Prince Seoul 4* http://www.hotelprinceseoul.com/	Till 31Aug14	NO	3,370	4,250	3,330	2,780	990	990	430	Myeong-dong Station	
	Hotel Surcharge (per room per night): 21-31Aug14 (Fri-Sat) Twin HKD200, Single HKD200										
	1Sep-30Nov14	NO	3,530	4,570	3,310	2,760	1,150	1,150	420	Myeong-dong Station	
	Hotel Surcharge (per room per night): 1Sep-30Nov14 (Fri-Sat) Twin HKD190, Single HKD190 / 12-14Sep14, 19-22Sep14, 10-12Oct14, 31Oct-2Nov14, 21-23Nov14 Twin HKD440, Single HKD440										
Ibis Ambassador Seoul Myeong Dong 3* (formerly Ibis Myeong Dong) http://www.ibishotel.com/6317 (Double Bed)	Till 31Aug14	NO	3,430	4,370	-	-	1,050	1,050	-	Myeong-dong Station	
	Hotel Surcharge (per room per night): 21-31Aug14 (Fri-Sat) Twin HKD120, Single HKD120										
	1-30Sep14	NO	3,610	4,730	-	-	1,240	1,240	-		Myeong-dong Station
	Hotel Surcharge (per room per night): 4Sep14, 12-30Sep14 (Sun-Thu) Twin HKD160, Single HKD160 / 4Sep14, 12-30Sep14 (Fri-Sat) Twin HKD250, Single HKD250 / 5-6Sep14 Twin HKD530, Single HKD530										
	10Oct-31Dec14	NO	3,750	5,010	-	-	1,370	1,370	-	Myeong-dong Station	
Hotel Surcharge (per room per night): 10Oct-31Dec14 (Fri-Sat) Twin HKD120, Single HKD120 / 1-6Oct14, 31Oct-2Nov14, 19-31Dec14 Twin HKD390, Single HKD390											
Hotel Skypark Central Myeongdong 4* http://skyparkhotel.com/eng/html/a/06.asp Blackout dates: 31Aug14	Till 31Aug14	NO	3,450	4,450	-	-	1,090	1,090	-	Euljiro 1-ga Station	
	Hotel Surcharge (per room per night): 21-30Aug14 (Fri-Sat) Twin HKD190, Single HKD190										
	1-30Sep14	NO	3,580	4,670	3,710	3,160	1,200	1,200	620		Euljiro 1-ga Station
	Hotel Surcharge (per room per night): 1-30Sep14 (Fri-Sat) Twin HKD190, Single HKD190 / 12-14Sep14, 19-22Sep14 Twin HKD640, Single HKD640										
	10Oct-30Nov14	NO	3,660	4,830	3,710	3,160	1,280	1,280	620	Euljiro 1-ga Station	
Hotel Surcharge (per room per night): 10Oct-30Nov14 (Fri-Sat) Twin HKD190, Single HKD190 / 10-12Oct14, 31Oct-2Nov14, 21-23Nov14 Twin HKD560, Single HKD560											
Seoul Koreana Hotel 5* http://www.koreanahotel.com/	Till 31Aug14	NO	3,480	4,470	3,690	3,140	1,110	1,110	620	City Hall Station	
	1-30Sep14		3,630	4,770	3,670	3,120	1,250	1,250	600		
	Hotel Surcharge (per room per night): 12-14Sep14, 19-22Sep14 Twin HKD390, Single HKD390										
	10Oct-30Nov14	NO	3,720	4,950	3,670	3,120	1,340	1,340	600		
Hotel Surcharge (per room per night): 10-12Oct14, 1-2Nov14, 21-23Nov14 Twin HKD490, Single HKD490											
Millennium Hilton Seoul 5* http://www.hilton.co.kr/	Till 31Aug14, 1-31Dec14	NO	3,770	5,050	3,500	2,950	1,400	1,400	520	Seoul Station	
	1Sep-31Oct14		3,970	5,440	3,500	2,950	1,590	1,590	520		
	1-30Nov14		3,870	5,250	3,500	2,950	1,490	1,490	520		
Seoul Plaza Hotel 5* http://www.seoulplaza.co.kr/	Till 14Sep14	NO	3,940	5,400	3,500	2,950	1,570	1,570	520	City Hall Station	
Hotel Surcharge (per room per night): 12-14Sep14 Twin HKD1230, Single HKD1230											



Seoul 首爾

3-Day / 2-Night Package

Validity: 3Sep-31Dec14

\$2,890^{up}

Accommodation	Period of stay	Breakfast	Adult			Child	Extension (per room night)			Public Transport / Location	
			Twin Share	Single	Extra Bed	Extra Bed	Twin	Single	Extra Bed		
Myeong Dong & Namdaemun Market 明洞&南大門											
Lotte Hotel Seoul 5* http://www.lottehotel.co.kr/korean/grand/ (Main Wing)	Till 31Aug14	NO	4,220	5,960	3,880	3,330	1,850	1,850	710	Euljiro 1-ga Station	
	1-14Sep14		4,410	6,330	3,880	3,330	2,040	2,040	710		
	<i>Hotel Surcharge (per room per night): 12-14Sep14 Twin HKD770, Single HKD770</i>										
	15-30Sep14	NO	4,500	6,520	3,880	3,330	2,130	2,130	710		
	<i>Hotel Surcharge (per room per night): 20-21Sep14 Twin HKD210, Single HKD210</i>										
Banyan Tree Club & Spa Seoul 5* http://www.banyantree.com/en/seoul/ Room type: Deluxe	Till 31Dec14 (Min. 3N)	NO	6,020	9,540	3,630	3,080	3,640	3,640	590	Beotigogae Station	
	<i>Hotel Surcharge (per room per night): 25-31Aug14 Twin HKD1190, Single HKD1190 / 20-24Aug14, 20Dec14-2Jan15 Twin HKD2450, Single HKD2450</i>										
	<i>Hotel Surcharge (per room per night): 10-12Oct14, 31Oct-2Nov14 Twin HKD680, Single HKD680</i>										

Please state "CX GV2 fare IN (date) OUT (date) at (hotel name)" at OSI field in PNR.

High Season Air Fare Surcharge					
Date	Applicable flights	Validity	Class	Adult	Child
3-4Sep14, 8-29Sep14, 30Oct-17Dec14	Valid on any CX operating flights	7 days	S	NIL	NIL
3-4Sep14, 8-29Sep14, 30Oct-19Dec14, 27-31Dec14	Valid on any CX operating flights	7 days (extended to 14 days surcharge HKD500 per person)	V	240#	180#
5-7Sep14, 30Sep-20Oct14				620	460
20-26Dec14				1,650	1,240
Premium Economy Class Air Fare Surcharge					
3-4Sep14, 8-29Sep14, 30Oct-17Dec14	Valid on any CX operating flights	7 days	E	980	730
3-4Sep14, 8-29Sep14, 30Oct-19Dec14, 27-31Dec14	Valid on any CX operating flights	7 days (extended to 14 days surcharge HKD500 per person)	E	1,290	970
5-7Sep14, 30Sep-20Oct14				1,670	1,250
20-26Dec14				2,700	2,020
Business Class Air Fare Surcharge					
3-4Sep14, 8-29Sep14, 30Oct-17Dec14	Valid on any CX operating flights	7 days	I	4,820	3,610
35Sep-19Dec14, 27-31Dec14	Valid on any CX operating flights	7 days (extended to 14 days surcharge HKD500 per person)	I	5,190	3,890
20-26Dec14				Fri-Sat	6,850

Low season upselling from V-class to L-class is permitted at ADDITIONAL HKD150 per sector

以上價格包括:

- 國泰航空來回香港至首爾經濟客位機票 (電子機票)
- 2 晚住宿於自選酒店
- 每天酒店早餐(只限指定酒店)
- 飛行保險港幣 1,000,000 元 (最多 14 天)
- 香港機場保安稅
- 0.15% 旅遊業議會印花稅

備註:

- 訂位代號/機票有效期: (請參閱上列附加費表)
- 適用於 CX 營運航班/ 累積飛行哩數之訂位代號請瀏覽 www.asiamiles.com
- 酒店住宿必須於 14 年 12 月 31 日或之前完成。(特別註明除外)
- 最少兩人(支付成人價錢)同行, 所有同行客人之行程、航班必須相同, (於同一電腦代號(PNR)內訂位)並必須於去程及回程時一同辦理登機手續。
- 以上價錢於旺季及交易會期間或需繳付附加費。
- 如只預訂房間或作不連續住宿, 酒店價目及條款或會有所調整及變動。
- 旅遊套餐不得更改航班 / 日期 / 行程及不可退款。
- 以上價格不包括所有有關稅項及附加費。價格如有任何變更恕不另行通知。