

包

- BTS 一日票 或 電話 Sim Card (二選一)
- 胡慧冲曼谷旅遊小冊子
- The Oasis Spa 禮券

(由泰國政府旅遊局送出, 數量有限, 先到先得)

amazing THAILAND
It Begins with the People...

Bangkok 曼谷

3-Day / 2-Night Package
 Validity: 16Mar-31Oct15

\$1,990 up



Anantara Bangkok Sathorn 4*

bangkok-sathorn.anantara.com

- ✓ 位於曼谷市中心, 鄰近市內的商業及購物中心, 步行到 BTS Chong Nonsi 站只需約 10 分鐘
- ✓ 客房設有露台和落地玻璃窗, 可俯瞰市中心全景
- ✓ 擁有室外游泳池、免費停車場、24 小時健身中心及 3 間餐廳等
- ✓ 一/兩臥室客房均設有客飯廳、廚房及工作台, 設備齊全



Room Type	Period of stay	Breakfast	Adult		Child		Extension (per room night)			
			Twin + Extra bed (3 Pax Share)	Twin (2 Pax Share)	Twin + Extra bed (3 Pax Share)		1 Bedroom	Extra bed		
One Bedroom Suite 64 SQM (King/ Twin) 3A / 2A+2C	Till 31Mar15	YES	2,180	2,140	1,870		750	350		
	1Apr-31Oct15		2,230	2,220	1,920		820	350		
<i>Hotel Surcharge (per room per night): 18-26Feb15 Twin HKD190, Triple HKD190</i>										
Two Bedroom Suite 121 SQM (King + Twin) 5A / 4A+2C	Till 31Mar15		2 Bedroom + Extra bed (5 Pax Share)	2 Bedroom (4 Pax Share)	2 Bedroom (3 Pax Share)	2 Bedroom + Extra bed (5 Pax Share)	2 Bedroom (4 Pax Share)	2 Bedroom (3 Pax Share)	2 Bedroom	Extra bed
	1Apr-31Oct15	2,060	1,990	2,180	1,750	1,690	1,870	1,070	350	
<i>Hotel Surcharge (per room per night): 18-26Feb15 HKD330</i>										
			2,110	2,060	2,260	1,800	1,750	1,950	1,190	350



Value Added: (till 17Feb15, 27Feb-31Mar15)

- Complimentary upgrade from One Bedroom Suite to Skyline One Bedroom Suite (Subject to availability)
- Complimentary upgrade from Two Bedroom Suite to Skyline Two Bedroom Suite (Subject to availability)

包

- BTS 一日票 或 電話 Sim Card (二選一)
- 胡慧沖曼谷旅遊小冊子
- The Oasis Spa 禮券

(由泰國政府旅遊局送出, 數量有限, 先到先得)

amaz'ng THAILAND
 It Begins with the People...

Bangkok 曼谷

3-Day / 2-Night Package
 Validity: 16Mar-31Oct15

\$1,990 up



Marriott Executive Apartment Sathorn Vista 5*

<http://www.marriott.com/hotels/travel/bkkea-sathorn-vista-bangkok-marriott-executive-apartments/>

- ✓ 位於曼谷市中心商業區, 步行約 10 分鐘即可到達 BTS Sala Daeng 站
- ✓ 客房以居家式的居住空間設計, 營造出家的感覺
- ✓ 擁有室外游泳池、遊戲室、健身中心及兒童娛樂室等
- ✓ 兩臥室客房均設有客飯廳、廚房, 設備齊全



Room Type	Period of stay	Breakfast	Adult		Child		Extension (per room night)			
			King + Extra bed (3 Pax Share)	King (2 Pax Share)	King + Extra bed (3 Pax Share)	King (2 Pax Share)	1 Bedroom	Extra bed		
One Bedroom Deluxe Suite 65 SQM (King) 3A / 2A+1C Hong Kong Market	Till 28Feb15, 1Jun-31Oct15	YES	2,420	2,550	2,110		1,170	280		
	1Mar-31May15		2,340	2,460	2,030		1,050	280		
Two Bedroom Deluxe Suite 100 SQM (King + Twin) 5A / 4A+1C Hong Kong Market	Till 28Feb15, 1Jun-31Oct15		2 Bedroom + Extra bed (5 Pax Share)	2 Bedroom (4 Pax Share)	2 Bedroom + Extra bed (5 Pax Share)	2 Bedroom (4 Pax Share)	2 Bedroom (3 Pax Share)	2 Bedroom	Extra bed	
			-	2,310	2,580	-	2,000	2,270	1,670	-
	1Mar-31May15		-	2,160	2,390	-	1,850	2,080	1,380	-

Family Offer: (till 31Oct15)

- Max. 1 child under 12 years old sharing room with parents
- Breakfast for child 5-12 years old charged at HKD90 per person per meal

Blackout dates: 19-25Feb15

包

- BTS 一日票 或 電話 Sim Card (二選一)
- 胡慧冲曼谷旅遊小冊子
- The Oasis Spa 禮券

(由泰國政府旅遊局送出, 數量有限, 先到先得)

amazing THAILAND
 It Begins with the People...

Bangkok 曼谷

3-Day / 2-Night Package
 Validity: 16Mar-31Oct15

\$1,990 up



Marriott
 EXECUTIVE APARTMENTS
 MAYFAIR - BANGKOK

Marriott Executive Apartment Mayfair Bangkok 5*

www.execapartments.com/bkker

- ✓ 位於曼谷市中心商業區, 地處著名住宅區內, 靠近眾多頂級購物商場, 大使館, BTS 站, 市場與 Lumpini 公園等。
- ✓ 客房均設有客飯廳及廚房
- ✓ 擁有室外游泳池、24 小時健身俱樂部、屋頂鹽水泳池、水療中心及兒童遊樂區等



Room Type	Period of stay	Breakfast	Adult		Child		Extension (per room night)			
			King + Extra bed (3 Pax Share)	King (2 Pax Share)	King + Extra bed (3 Pax Share)	Child	1 Bedroom	Extra bed		
1 Bedroom Superior Suite 54 SQM (King) 3A / 2A+2C Except Middle East	Till 30Apr15	YES	2,230	2,280	1,920	880	300			
	1May-31Oct15		2,450	2,610	2,140	1,210	300			
2 Bedroom Suite 100 SQM (King+Queen) 5A / 4A+2C Except Middle East	Till 30Apr15		2 Bedroom + Extra bed (5 Pax Share)	2 Bedroom (4 Pax Share)	2 Bedroom (3 Pax Share)	2 Bedroom + Extra bed (5 Pax Share)	2 Bedroom (4 Pax Share)	2 Bedroom (3 Pax Share)	1,500	300
	1May-31Oct15		2,360	2,410	2,720	2,050	2,100	2,410	1,870	300

Hotel Surcharge (per room per night): 20-28Feb15 Twin HKD350, Triple HKD350

Hotel Surcharge (per room per night): 20-28Feb15 HKD400

Family Offer: (1May-31Oct15)

- Free extra bed (room only) for child under 12 years old (subject to availability)
- Breakfast for child under 12 years old will be charged at HKD80 per child per meal



包

- BTS 一日票 或 電話 Sim Card (二選一)
- 胡慧冲曼谷旅遊小冊子
- The Oasis Spa 禮券

(由泰國政府旅遊局送出, 數量有限, 先到先得)

amazing THAILAND
 It Begins with the People...

Bangkok 曼谷

3-Day / 2-Night Package
 Validity: 16Mar-31Oct15

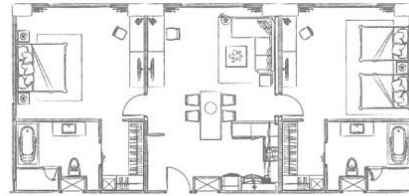
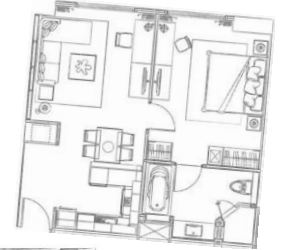
\$1,990 up



Marriott Executive Apartment Sukhumvit Park 5*

<http://www.execapartments.com/bkksp>

- ✓ 位於曼谷市中心商業區 Sukhumvit Soi 24 繁華地帶, 鄰近曼谷主要辦公室及著名地標, 堪稱當地頂級酒店之一
- ✓ 全新裝修的公寓式酒店提供 300 間客房, 設備齊全的廚房、高級浴室
- ✓ 娛樂設施相當齊全, 包括高爾夫球場, 健身中心, 蒸浴室, Spa, 兒童娛樂室等



Room Type	Period of stay	Breakfast	Adult		Child		Extension (per room night)	
			King + Extra bed (3 Pax Share)	King (2 Pax Share)	King + Extra bed (3 Pax Share)	King (2 Pax Share)	1 Bedroom	Extra bed
One Bedroom Suite 65 SQM (King) 3A / 2A+2C	Till 31Oct15	YES	2,360	2,400	2,050		1,000	380
			<i>Hotel Surcharge (per room per night): 20-28Feb15 Twin HKD320</i>					
Two Bedroom Apartment 130 SQM (King+Double) 5A / 4A+2C	Till 31Oct15	YES	2 Bedroom + Extra bed (5 Pax Share)	2 Bedroom (4 Pax Share)	2 Bedroom + Extra bed (5 Pax Share)	2 Bedroom (3 Pax Share)	2,150	380
			2,500	2,550	2,900	2,190	2,240	2,590
<i>Blackout dates: 20-28Feb15</i>								

Added Value: (1Apr-31May15)

- Complimentary in-room Internet access
- Complimentary extra bed for 3rd person, breakfast will be charged HKD120 per person per meal

Value Added: (till 31Oct15)

- Complimentary Tuk Tuk transfer to/from the sky train (BTS - Phrom Phong station)



包

- BTS 一日票 或 電話 Sim Card (二選一)
- 胡慧冲曼谷旅遊小冊子
- The Oasis Spa 禮券

(由泰國政府旅遊局送出, 數量有限, 先到先得)

amazing THAILAND
 It Begins with the People...

Bangkok 曼谷

3-Day / 2-Night Package
 Validity: 16Mar-31Oct15

\$1,990 up



Shama Sukhumvit Bangkok 4*

<http://www.shama.com/sukhumvit/>

- ✓ 位於曼谷市中心, 鄰近曼谷各旅遊熱點, 商業區及 BTS 站, 交通十分方便
- ✓ 客房均設有露台、客飯廳及廚房
- ✓ 擁有空中室外游泳池、兒童遊樂區、熱帶花園(設有燒烤設施)及健身中心等



Room Type	Period of stay	Breakfast	Adult		Child		Extension (per room night)			
			Twin + Extra bed (3 Pax Share)	Twin (2 Pax Share)	Twin + Extra bed (3 Pax Share)		1 Bedroom	Extra bed		
One Bedroom Premier 66 SQM (Double/ Twin) 3A / 2A+1C	Till 31Mar15	YES	2,280	2,280	1,970		870	380		
	1Apr-15Aug15		2,450	2,530	2,140		1,120	380		
	16Aug-31Oct15		2,540	2,660	2,230		1,260	380		
<i>Hotel Surcharge (per room per night): 3-18Apr15, 18Jul-15Aug15 Twin HKD300, Triple HKD300</i>										
Two Bedroom Premier 107-110 SQM (Double+Twin) 5A / 3A+2C	Till 31Mar15	YES	2,240	2,220	2,460	1,930	1,910	2,150	1,490	380
	1Apr-15Aug15		2,390	2,400	2,710	2,080	2,090	2,400	1,860	380
	16Aug-31Oct15		2,440	2,470	2,800	2,130	2,160	2,490	2,000	380
<i>Hotel Surcharge (per room per night): 3-18Apr15, 18Jul-15Aug15 HKD300</i>										
<i>Hotel Surcharge (per room per night): 23Sep-5Oct15 Twin HKD160, Triple HKD160</i>										



Family Offer: (till 31Oct15)

- Max. 2 child under 12 years old sharing room with parents
- Breakfast for children 6-12 years old charged at HKD70 per person per meal

包

- BTS 一日票 或 電話 Sim Card (二選一)
- 胡慧冲曼谷旅遊小冊子
- The Oasis Spa 禮券

(由泰國政府旅遊局送出, 數量有限, 先到先得)

amazing THAILAND
It Begins with the People...

Bangkok 曼谷

3-Day / 2-Night Package
Validity: 16Mar-31Oct15

\$1,990 up



GRANDE
Centre Point
HOTEL
RATCHADAMRI • BANGKOK

Grande Centre Point Hotel Ratchadamri 5*

<http://cn.grandecentrepointratchadamri.com/>

- ✓ 位於曼谷市中心商業區, 鄰近 BTS 站、Ratchaprasong 購物街以及四面佛, 步行至 Central World 只需約 10 分鐘
- ✓ 客房均設有客飯廳及廚房
- ✓ 擁有室外游泳池、兒童游泳池、兒童遊戲室、娛樂室及健身設備等



Room Type	Period of stay	Breakfast	Adult		Child		Extension (per room night)	
			2 Bedroom + Extra bed (5 Pax Share)	2 Bedroom (4 Pax Share) (3 Pax Share)	2 Bedroom + Extra bed (5 Pax Share)	2 Bedroom (4 Pax Share) (3 Pax Share)	2 Bedroom	Extra bed
Grand Suite Quad room 69 SQM (Double/Twin + 2 Extra beds) 4A+1C Hong Kong Market	Till 31Oct15	YES	-	2,300 2,580	-	1,990 2,270	1,660	-

Family Offer: (till 31Oct15)

- Accommodation is free for 1 child under 12 years old sharing room with parents
- Baby cot is free of charge (Subject to availability)
- Compulsory breakfast for child 4-12 years old will charge at HKD90 per child per meal
- Complimentary breakfast for child 0-3 years old



ORIENTAL RESIDENCE
BANGKOK

Oriental Residence Bangkok 5*

www.oriental-residence.com/

- ✓ 位於曼谷市中心商業區, 地處著名住宅區內, 靠近眾多頂級購物商場, 大使館, BTS 站, 市場與 Lumpini 公園等。
- ✓ 客房均設有客飯廳及廚房
- ✓ 擁有 2 個室外游泳池、健身設備及兒童游泳池等



Room Type	Period of stay	Breakfast	Adult		Child		Extension (per room night)	
			2 Bedroom + Extra bed (5 Pax Share)	2 Bedroom (4 Pax Share) (3 Pax Share)	2 Bedroom + Extra bed (5 Pax Share)	2 Bedroom (4 Pax Share) (3 Pax Share)	2 Bedroom	Extra bed
One Bedroom Suite 70 SQM (King) 3A / 2A+1C Hong Kong market (till 31Mar15)	Till 31Mar15	YES	King + Extra bed (3 Pax Share)	King (2 Pax Share)	King + Extra bed (3 Pax Share)		1 Bedroom	Extra bed
			2,710	2,820	2,400		1,410	480
	1Apr-31Oct15		2,900	3,110	2,590		1,710	480
Two Bedroom Suite 120 SQM (King+Twin) 5A / 3A+2C Hong Kong market (till 31Mar15)	Till 31Mar15	YES	2 Bedroom + Extra bed (5 Pax Share)	2 Bedroom (4 Pax Share) (3 Pax Share)	2 Bedroom + Extra bed (5 Pax Share)	2 Bedroom (4 Pax Share) (3 Pax Share)	2 Bedroom	Extra bed
			2,830	2,900 3,380	2,520	2,590 3,070	2,870	480
	1Apr-31Oct15		2,950	3,050 3,490	2,640	2,740 3,180	3,160	480

包

- BTS 一日票 或 電話 Sim Card (二選一)
- 胡慧冲曼谷旅遊小冊子
- The Oasis Spa 禮券

(由泰國政府旅遊局送出, 數量有限, 先到先得)

1,000 Baht Gift Certificate

amazing THAILAND
It Begins with the People...

Bangkok 曼谷

3-Day / 2-Night Package
Validity: 16Mar-31Oct15

\$1,990 up



Optional Bangkok Airport - Hotel Transfer	
Suvarnabhumi / Donmuang Airport to Hotel or v.v. (45 - 60 minutes)	Price per van per way (Max. 6pax)
	HKD 320



- Compulsory "ATTA Airport Service Voucher (Arrival only)" at HKD5 per person
- For services between 2100hrs-0900hrs, surcharge HKD100/van/way

- Optional transfers must be booked in conjunction with air + hotel package
- Max. 6 pax (6 seats for passengers / 3 seats for luggage) can be accommodated per van

Please state "CX GV2 fare IN (date) OUT (date) at (hotel name)" at OSI field in PNR.

Air Fare Surcharge for High Season

Date	Flight Restrictions	Class	Validity	Adult	Child
16Mar-1Apr15, 7Apr-8Jul15	HKG/BKK valid on flight departure on/after 1100	O	2-7 days	NIL#	NIL#
	Valid on CX flight only			250#	190#
16Mar-1Apr15, 7Apr-8Jul15	HKG/BKK NOT valid on CX701/709 BKK/HKG NOT valid on CX702/712	N	2-7 days	550	860
16Mar-1Apr15, 7Apr-8Jul15, 24Aug-31Oct15	Valid on CX flight only	N	2-7 days (extended to 14days additional surcharge HKD500 per person)	580*#	440*#
2-6Apr15		M		1880#	1410#
9Jul-23Aug15				850#	640#

Business Class Air Fare Surcharge

16Mar-1Apr15, 7Apr-8Jul15	Valid on CX flight only	I	2-7 days	2850	2140
16Mar-1Apr15, 7Apr-31Oct15	Valid on CX flight only	I	2-7 days (extended to 14days additional surcharge HKD500 per person)	3280	2460
2-6Apr15				4430	3320

*Low season upselling from N-class to S-class is permitted at ADDITIONAL HKD100 per sector
#Upselling to E-class (Premium Economy) is permitted at ADDITIONAL HKD500 per sector

以上價格包括:

- 國泰航空來回香港至曼谷經濟客位機票 (電子機票)
- 2 晚住宿於自選酒店
- 每天酒店早餐 (只限指定酒店)
- 飛行保險港幣 1,000,000 元 (最多 14 天)
- 香港機場保安稅
- 0.15% 旅遊業議會印花稅

備註:

- 訂位代號 / 機票有效期: (請參閱上列附加費表)
- 適用於 CX 營運航班 / 累積飛行哩數之訂位代號請瀏覽 www.asiamiles.com
- 酒店住宿必須於 15 年 10 月 31 日或之前完成。(特別註明除外)
- 最少兩人 (支付成人價錢) 同行, 所有同行客人之行程、航班必須相同 (於同一電腦代號 (PNR) 內訂位), 並必須於去程及回程時一同辦理登機手續。
- 以上價錢於旺季及交易會期間或需繳付附加費。
- 如只預訂房間或作不連續住宿, 酒店價目及條款或會有所調整及變動。
- 傳單上所列明的交通訊息或時間 (例: 航班/車次) 如有任何更改, 均以官方資訊為準, 恕不另行通知。
- 旅遊套餐不得更改航班 / 日期 / 行程及不可退款。
- 以上價格不包括所有有關稅項及附加費。價格如有任何變更恕不另行通知