

# 國泰港龍/國泰航空 酒店套票精選 · 金邊 Phnom Penh

3日2夜 [出發日期: 至2018年10月31日] | 3 Days 2 Nights [Travel Period: Till 31Oct2018]



✓ 來回國泰港龍/國泰航空經濟客位機票  
 Round trip economy class air ticket on KA/CX

✓ 2晚酒店住宿連早餐  
 2 nights hotel accommodation with daily breakfast



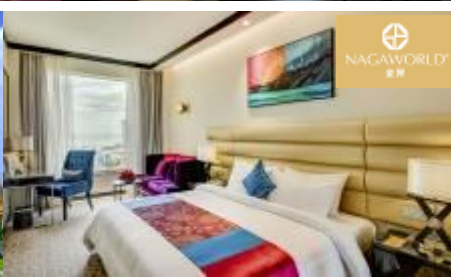
## Juliana Hotel Phnom Penh

★★★★★

<http://phnompenh.julianahotels.com/>

Superior

成人佔半房 每位 **\$2190**起



## NagaWorld Hotel & Entertainment Complex

★★★★★

[www.nagaworld.com](http://www.nagaworld.com)

Superior – New Hotel Tower

成人佔半房 每位 **\$2360**起



## Amanjaya Pancam Suites Hotel

★★★★★

[www.amanjaya-suites-phnom-penh.com](http://www.amanjaya-suites-phnom-penh.com)

Junior Suite

成人佔半房 每位 **\$2650**起



## La Rose Boutique Hotel & Spa

★★★★★

<http://larose.com.kh/home.php>

La Rose Deluxe

成人佔半房 每位 **\$2760**起

※ 套票以淡季價格計算，於旺季、假期前夕或大型節日期間出發，需另付附加費。詳情向本社職員查詢作準。



# 國泰港龍/國泰航空 酒店套票精選 · 金邊 Phnom Penh

3日2夜 [出發日期: 至2018年10月31日] | 3 Days 2 Nights [Travel Period: Till 31Oct2018]



✓ 來回國泰航空經濟客位機票  
 Round trip economy class air ticket on CX

✓ 2晚酒店住宿連早餐  
 2 nights hotel accommodation with daily breakfast



ROSEWOOD  
 PHNOM PENH

## Rosewood Phnom Penh

★★★★★

[www.rosewoodhotels.com/en/phnom-penh](http://www.rosewoodhotels.com/en/phnom-penh)

Executive

成人佔半房  
 每位 **\$3530**起



## The Great Duke Phnom Penh

★★★★★

<https://thegreatdukehotels.com.kh/>

Deluxe

成人佔半房  
 每位 **\$3580**起



RAFFLES  
 HOTEL LE ROYAL

## Raffles Hotel Le Royal

★★★★★

[www.raffles.com/phnom-penh](http://www.raffles.com/phnom-penh)

State Room

成人佔半房  
 每位 **\$3760**起



SOFITEL  
 HOTEL & RESORTS  
 PHNOM PENH PHOKEETHRA

## Sofitel Phnom Penh Phokeethra

★★★★★

[www.sofitel-phnompenh-phokeethra.com](http://www.sofitel-phnompenh-phokeethra.com)

Superior

成人佔半房  
 每位 **\$3880**起

※ 套票以淡季價格計算，於旺季、假期前夕或大型節日期間出發，需另付附加費。詳情向本社職員查詢作準。



# 國泰港龍/國泰航空 酒店套票精選 · 金邊 Phnom Penh

3日2夜 [出發日期: 至2018年10月31日] | 3 Days 2 Nights [Travel Period: Till 31Oct2018]



## 國泰港龍/國泰航空 金邊機票附加費表 KA CX Phnom Penh Airfare Surcharge 出發日期: 2018年3月28日- 10月31日 Travel Period: 28Mar – 31Oct 2018

2 人成行 GV2 (min. 2 adults)						
Departure		Adult	Child	Booking class	Ticket validity	
Economy Class	02Apr-31Jul	HKG/PNH valid on flight departure on/before 1200 noon		N	2-7 days	
		Any dates				
	28Mar-01Apr	1040	780	V	3-9 days	
		410	310	S		
02Apr-31Oct	1040	780	V	2-7 days		
	2560	1920	I			2-14 days
28Mar-01Apr	4660	3500				
02Apr-31Oct	2990	2250				



Price Includes :  
 • Round trip economy class air ticket on KA/CX  
 • 2 nights hotel accommodation with daily breakfast  
 • HK\$100,000 Travel Insurance [Zurich Insurance(Hong Kong) 24-hour emergency hotline+852-2886-3977]  
 • 0.15% TIC Levy

Child travel with min 2 adults price :  
 • Twin sharing / Extra bed adult price less : \$670

Terms & Conditions :  
 • Package price is per person ( in HK\$ ) and valid between **28Mar-31Oct18**; and hotel stay must be completed by 31Oct  
 • Booking class : S (except specified periods) Ticket validity : 2-14 days  
 • Twin room is based on 2 single beds or 1 double bed  
 • Minimum 2 adults traveling together on same outbound & inbound flights, and booking must be reserved under the same record locator (PNR) for all passengers  
 • "OSI : KA HTL PKG FARE HOTEL NAME IN DATE OUT DATE" and "OSI : KA SIT - 2 FARE x MIN 2 PASSENGERS TRAVEL TOGETHER" must be input in OSI field of PNR  
 • Airport tax, HK security charge & fuel surcharge (if any) are not included  
 • Hotel star ratings are for reference only, please visit hotel's official website for more information  
 • All the above benefits are only applicable for maximum 2 persons per room per stay  
 • A non-refundable deposit of HK\$1000 per person required upon reservation  
 • Full payment must be made after confirmation with no refund  
 • Upon confirmation, any amendment is subject to our company's discretion  
 • All prices and conditions are subject to change without prior notice  
 • Check whether the Security Bureau has issued any [Outbound Travel Alert](#) for your destination before firming up your travel plan to ensure personal safety

費用包括 :  
 • 來回國泰港龍/國泰航空經濟客位機票  
 • 2晚酒店住宿連早餐  
 • HK\$100,000旅遊保險 [蘇黎世保險(香港) 24小時緊急支援服務+852-2886-3977]  
 • 0.15%旅遊業賠償基金

小童最少要與兩位成人同行價錢 :  
 • 佔床或加床收費按成人減收 : \$670

條款及細則 :  
 • 以上套票價錢以每成人計算, 有效日期: **2018年3月28日至10月31日**;  
 酒店入住必須於10月31日或之前完成  
 • 訂位代號: S (指定日子除外) 機票有效期: 2-14日  
 • 雙人房之房種2張單人床或1張雙人床  
 • 來回程均要最少兩位成人同行, 訂位時亦必須最少兩位客人在同一個PNR內  
 • PNR必須註明住宿酒店名稱及日期如下:  
 "OSI : KA HTL PKG FARE HOTEL NAME IN DATE OUT DATE"  
 "OSI : KA SIT - 2 FARE x MIN 2 PASSENGERS TRAVEL TOGETHER"  
 • 費用並未包括香港機場保安稅, 兩地機場稅及燃油附加費(如適用)  
 • 酒店星級只供參考, 詳情請到訪酒店官方網頁查詢  
 • 以上優惠每次每房最多適用於兩位客人  
 • 訂位時須繳交訂金港幣每位\$1000  
 • 餘款需於機票及酒店確認後繳付及恕不退還  
 • 於機票及酒店確認後, 如需更改本公司擁有最終決定權  
 • 所有費用如有更改, 恕不另行通知  
 • 為確保自身安全, 旅客在落實行程前, 應留意保安局有沒有對目的地發出 [外遊警告](#)