

Taipei 台北

3-Day / 2-Night Package

Validity: 16Dec16-31Mar17

\$1,580^{up}



超值精選

Folio Daan Taipei 4*

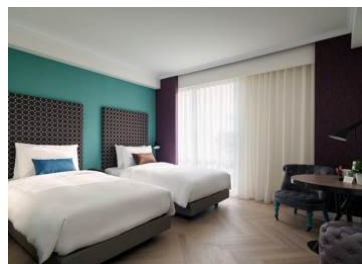
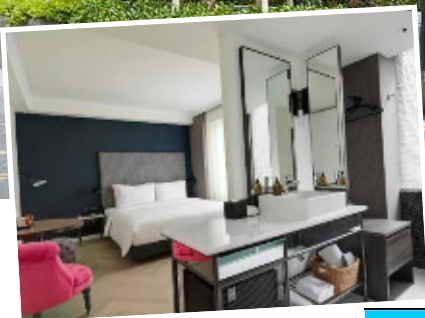
富藝旅

www.folio-hotels.com/daan/en/index2.asp

於16年8月
全新開幕!!



- 位於台北市中心大安區，鄰近最熱鬧的東區與信義商圈
- 提供 57 間舒適客房，部份房型更設有獨立陽台
- 鄰近大安捷運站，步行約 1-2 分鐘即可到達，交通十分便利
- 台北 101、國父紀念館、大安森林公園和松山文創園區等景點都近在咫尺



Room Type	Period of stay	Breakfast	Adult			Child	Extension (per room night)			Public Transport / Location	
			Twin Share	Single	Extra Bed	Extra Bed	Twin	Single	Extra Bed		
Opus 富藝客房	Till 1Jan17, 24Feb-31Mar17	YES	1,930	2,720	-	-	930	930	-	捷運 大安站	
	Hotel Surcharge (per room per night): - 23-25Dec16, 7-10Mar17, 21-24Mar17 Twin HKD170, Single HKD170 - 30Dec16, 1Jan17 Twin HKD460, Single HKD460 - 31Dec16 Twin HKD710, Single HKD710										
	2Jan-23Feb17	YES	1,880	2,630	-	-	880	880	-		
Hotel Surcharge (per room per night): 28-31Jan17 Twin HKD70, Single HKD70											

- Not valid for Japan, China and Taiwan Market / - Surcharge may impose during high season period

超值精選

Miramar Garden Taipei 4*

美麗信花園酒店

<http://www.miramargarden.com.tw/>
Extra bed = sofa bed

Accommodation	Room Type	Period of stay	Breakfast	Adult			Child	Extension (per room night)			Public Transport / Location	
				Twin Share	Single	Extra Bed	Extra Bed	Twin	Single	Extra Bed		
豪華客房		Till 31Dec16	YES	2,050	2,960	1,840	1,630	1,050	1,050	370	捷運 忠孝新生站	
		Hotel Surcharge (per room per night): 30-31Dec16 Twin HKD580, Single HKD580										
		1Jan-31Mar17	YES	2,050	2,970	1,870	1,660	1,050	1,050	380		
Hotel Surcharge (per room per night): - 1-2Jan17, 27-31Jan17 Twin HKD550, Single HKD550												

- Not valid for Japan, China and Taiwan Market / - Surcharge may impose during high season period

Taipei 台北

3-Day / 2-Night Package

Validity: 16Dec16-31Mar17

\$1,580^{up}



超值精選

Accommodation	Room Type	Period of stay	Breakfast	Adult			Child	Extension (per room night)			Public Transport / Location		
				Twin Share	Single	Extra Bed	Extra Bed	Twin	Single	Extra Bed			
PALAIS de CHINE HOTEL 5* 台北君品酒店 http://www.palaisdechinehotel.com/	雅緻客房	Till 22Dec16, 30Dec16-26Jan17, 5-28Feb17	NO	2,250	3,360	-	-	1,240	1,240	-	捷運 台北車站		
		Hotel Surcharge (per room per night): - Till 22Dec16, 2-26Jan17, 5-28Feb17 (Fri-Sat) Twin HKD90, Single HKD90 - 30Dec16-1Jan17 Twin HKD780, Single HKD780											
		23-29Dec16	NO	2,400	3,660	-	-	1,390	1,390	-			
		Hotel Surcharge (per room per night): - 23-29Dec16 (Fri-Sat) Twin HKD150, Single HKD150											
		27Jan-4Feb17, 1-31Mar17	NO	2,420	3,700	-	-	1,410	1,410	-			
Hotel Surcharge (per room per night): - 27Jan-3Feb17, 1-31Mar17 (Fri-Sat) Twin HKD120, Single HKD120													
The Westin Taipei 5* 威斯汀六福皇宮飯店 http://www.westin.com.tw/ Blackout dates: 31Dec16	精緻客房	Till 28Feb17	YES	2,720	4,110	-	-	1,720	1,620	-	捷運 南京東路站		
		1-31Mar17		2,970	4,600	-	-	1,970	1,870	-			
Shangri-La's Far Eastern Plaza 5* 香格里拉遠東國際大飯店 http://www.feph.com.tw/ Blackout dates: 31Dec16	Superior 豪華客房	Till 28Feb17	NO	2,900	4,670	-	-	1,900	1,900	-	捷運 六張犁站		
		Hotel Surcharge (per room per night): - Till 28Feb17 (Mon-Thu) Twin HKD200, Single HKD200											
Sheraton Grande Taipei Hotel 5* 台北喜來登大飯店 http://www.sheraton-taipei.com/	ROH (舒適客房/豪華客房)	Till 28Feb17	NO	2,610	4,090	2,150	1,940	1,610	1,610	520	捷運 善導寺站		
		Hotel Surcharge (per room per night): - Till 10Dec16, 23-26Dec16, 6-8Jan17, 28-31Jan17 Twin HKD220 Single HKD220 - 27-30Dec16 Twin HKD660, Single HKD660 - 31Dec16-1Jan17 Twin HKD900, Single HKD900											
		1-31Mar17	NO	2,810	4,480	2,150	1,940	1,800	1,800	520			
Hotel Surcharge (per room per night): 17-19Mar17 Twin HKD220, Single HKD220													
W Hotel Taipei 5* http://www.starwoodhotels.com/whotels Blackout dates: 31Dec16	Wonderful 奇妙客房	Till 31Mar17	YES	3,470	5,800	2,600	2,390	2,470	2,470	750	捷運 市政府站		
Le Meridien Taipei 5* 台北寒舍艾美酒店 http://www.lemeridien-taipei.com/ Blackout dates: 31Dec16	豪華客房	Till 23Dec16	NO	3,050	4,970	2,490	2,280	2,050	2,050	690	捷運 市政府站		
		24Dec16-31Mar17		3,540	5,650	2,490	2,280	2,530	2,390	690			
		Hotel Surcharge (per room per night): 24Dec16-31Mar17 (Mon-Thu) Twin HKD150, Single HKD140											

- Not valid for Japan, China and Taiwan Market / - Surcharge may impose during high season period

Taipei 台北

3-Day / 2-Night Package

Validity: 16Dec16-31Mar17

\$1,580^{up}



Accommodation	Room Type	Period of stay	Breakfast	Adult			Child	Extension (per room night)			Public Transport / Location
				Twin Share	Single	Extra Bed	Extra Bed	Twin	Single	Extra Bed	
台北火車站											
Forte Orange Business Hotel (Guanqian) 3* 福泰桔子商務旅館(館前店) http://www.forte-hotel.net/branch/index.asp Blackout dates: 2017 農曆春節 & 2017 自行車展	(Double Bed)	Till 31Mar17	YES	1,680	2,220	-	-	680	680	-	捷運 台北車站
				Hotel Surcharge (per room per night): 31Dec16 Twin HKD160, Single HKD160							
Look Hotel Taipei 3* 樂客商旅 http://www.lookhotel.com.tw/ Extra Bed = Sofa Bed/ Mattress Bed	ROH 標準(DBL)/ 菁英(TWN)	Till 31Mar17	YES	1,630	2,120	1,470	1,260	630	630	180	捷運 台大醫院站/ 台北車站
				Hotel Surcharge (per room per night): - Till 31Mar17 (Fri-Sat) & 25-29Dec16, 29Jan-1Feb17, 26-28Feb17, 21-23Mar17 Twin HKD150, Single HKD150 - 31Dec16 Twin HKD570, Single HKD570							
Master Hotel 3* 大師商旅 (Ex: Master Inn Hotel 大師會館國際酒店) (Hong Kong Market) http://www.master2011.com.tw/	花園/ 白宮客房	Till 31Dec16	NO	1,740	2,350	1,430	1,220	740	740	160	捷運 台北車站
				Hotel Surcharge (per room per night): - Till 22Dec16 (Fri-Sat) Twin HKD120, Single HKD120 - 23-24Dec16, 30-31Dec16 Twin HKD380, Single HKD380, Extra Bed HKD120							
	花園/ 白宮客房	1Jan-31Mar17	NO	1,750	2,370	1,930	1,720	750	750	410	
				Hotel Surcharge (per room per night): - 1Jan-31Mar17 (Fri-Sat) Twin HKD100, Single HKD100, Extra Bed HKD50 - 1Jan17, 29-30Jan17 Twin HKD400, Single HKD400, Extra Bed HKD170							
Cosmos Hotel 4* 天成大飯店 http://www.cosmos-hotel.com.tw/ Blackout dates: 2017 自行車展	Superior 精緻客房	Till 31Mar17	NO	1,830	2,470	1,530	1,320	820	800	210	捷運 台北車站
				Hotel Surcharge (per room per night): - 23-26Dec16, 30Dec16-1Jan17, 28Jan-1Feb17 Twin HKD150, Single HKD150							
Caesar Park Hotel 4* 凱撒大飯店 http://www.caesarpark.com.tw/	Superior 精緻客房	Till 30Nov16, 1-31Mar17	NO	2,100	3,060	1,950	1,740	1,090	1,090	420	捷運 台北車站
				Hotel Surcharge (per room per night): 21-25Mar17 Twin HKD240, Single HKD240							
		1Dec16-28Feb17	NO	1,980	2,820	1,950	1,740	970	970	420	
				Hotel Surcharge (per room per night): - 24Dec16-3Jan17 Twin HKD360, Single HKD360 - 28Jan-1Feb17 Twin HKD140, Single HKD140							
Hotel Cozzi Zhongxiao 4* 和逸忠孝館 http://www.hotelcozzi.com/zhongxiao/ Blackout dates: 31Dec16	舒適客房	Till 28Feb17	YES	2,280	3,420	-	-	1,280	1,280	-	捷運 普寧寺站
				Hotel Surcharge (per room per night): - 1Jan17, 28-31Jan17 Twin HKD770, Single HKD770							
	舒適客房	1-31Mar17	YES	2,400	3,670	-	-	1,400	1,400	-	
西門町區											
East Dragon Hotel 3* 東龍大飯店 http://www.east-dragon.com.tw/	(Double Bed) 一般樓層	Till 31Mar17	YES	1,580	2,020	1,430	1,220	580	580	160	捷運 西門站
				Hotel Surcharge (per room per night): - 16Dec16-1Jan17, 27-31Jan17 Twin HKD50, Single HKD50							
Taisugar Hotel Taipei 4* 台糖台北會館 http://www.taipei-hotel-tsc.com.tw/ Blackout dates: 24Dec16, 31Dec16	ROH	Till 31Mar17	YES	1,850	2,570	1,570	1,360	850	850	230	捷運 西門站
				Hotel Surcharge (per room per night): - 1Jan17, 29-31Jan17 Twin HKD160, Single HKD160							
Just Sleep (Ximending) 3* 捷絲旅 (西門町館) http://www.justsleep.com.tw/ Min. 2 nights stay during 28Nov-12Dec16, 2-26Jan17, 27Jan-22Mar17, 25-31Mar17 (Sat) & 24-31Dec16	Superior 精緻客房	Till 31Mar17	YES	1,880	2,630	1,900	1,690	880	880	400	捷運 西門站
				Hotel Surcharge (per room per night): - Till 12Dec16, 2-26Jan17, 5Feb-22Mar17, 25-31Mar17 (Fri-Sat) & 13-23Dec16, 23-24Mar17 Twin HKD240, Single HKD240, Extra Bed HKD30 - 24-29Dec16, 1Jan17, 27Jan-4Feb17 Twin HKD360, Single HKD360 - 30-31Dec16 Twin HKD610, Single HKD610							

- Not valid for Japan, China and Taiwan Market / - Surcharge may impose during high season period

Taipei 台北

3-Day / 2-Night Package

Validity: 16Dec16-31Mar17

\$1,580^{up}



Accommodation	Room Type	Period of stay	Breakfast	Adult			Child	Extension (per room night)			Public Transport / Location	
				Twin Share	Single	Extra Bed	Extra Bed	Twin	Single	Extra Bed		
西門町區												
Amba Taipei Ximending 4* 台北西門町意舍酒店 http://www.amba-hotels.com/en/ximending/ Blackout dates: 31Dec16	Medium	Till 5Jan17	YES	1,930	2,720	2,080	1,870	930	930	490	捷運 西門站	
		Hotel Surcharge (per room per night): - Till 22Dec16 (Fri-Sat) Twin HKD200, Single HKD200 - 23-30Dec16, 1Jan17 Twin HKD370, Single HKD370										
		6Jan-31Mar17	YES	1,900	2,670	2,030	1,820	900	900	460		
Hotel Surcharge (per room per night): - 6Jan-31Mar17 (Fri-Sat) Twin HKD200, Single HKD200 - 27Jan-3Feb17 Twin HKD370, Single HKD370												
Westgate Hotel 4* 永安棧 http://www.westgatehotel.com.tw/ Blackout dates: 30Dec16-2Jan17	雅緻客房 (Double Bed)	Till 30Nov16, 1Feb-31Mar17	YES	2,000	2,870	-	-	1,000	1,000	-	捷運 西門站	
		Hotel Surcharge (per room per night): - Till 30Nov16, 5-23Feb17, 28Feb-20Mar17 (Fri-Sat) & 1-4Feb17, 24-27Feb17, 21-25Mar17, 31Mar17 Twin HKD140, Single HKD140										
		1Dec16-31Jan17	YES	1,950	2,770	-	-	950	950	-		
Hotel Surcharge (per room per night): - 1-17Dec16, 3-26Jan17 (Fri-Sat) Twin HKD150, Single HKD150 - 18-22Dec16 Twin HKD70, Single HKD70 - 26-29Dec16 Twin HKD190, Single HKD190 - 27-31Jan17 (Sun-Thu) Twin HKD270, Single HKD270 - 27-31Jan17 (Fri-Sat) & 23-25Dec16 Twin HKD390, Single HKD390												
Taipei Garden Hotel 5* 台北花園大酒店 http://www.taipeigarden.com.tw/ Blackout dates: 30-31Dec16	Superior 精緻客房	Till 28Feb17	NO	2,000	2,870	-	-	1,000	1,000	-	捷運 西門站	
		Hotel Surcharge (per room per night): - 29-31Jan17 Twin HKD390, Single HKD390 - 1Feb17 Twin HKD140, Single HKD140										
		1-31Mar17	NO	2,120	3,110	-	-	1,120	1,120	-		
Hotel Surcharge (per room per night): 6-11Mar17 Twin HKD390, Single HKD390												
中山區												
aloft Taipei Zhongshan 3* 台北中山雅樂軒酒店 http://www.alofttaipeizhongshan.com/ Blackout dates: 31Dec16 Newly Opened in Dec2015	Aloft 快活樂窩 (Double Bed)	Till 31Mar17	YES	2,560	3,800	-	-	1,560	1,470	-	捷運 中山國小站	
		Hotel Surcharge (per room per night): - 24Dec16 Twin HKD390, Single HKD390 - 30-31Dec16 Twin HKD580, Single HKD580										
Landis Taipei 5* 亞都麗緻大飯店 http://taipei.landishotelsresorts.com/	Superior 卓越客房	Till 31Dec16	YES	2,340	3,550	-	-	1,340	1,340	-	捷運 中山國小站	
		Hotel Surcharge (per room per night): - 24Dec16 Twin HKD390, Single HKD390 - 30-31Dec16 Twin HKD580, Single HKD580										
		1Jan-28Feb17	YES	2,220	3,210	-	-	1,220	1,170	-		
		Hotel Surcharge (per room per night): - 1-2Jan17 Twin HKD700, Single HKD750 - 3Jan17 Twin HKD660, Single HKD660 - 28-31Jan17 Twin HKD510, Single HKD460										
1-31Mar17	YES	2,370	3,500	-	-	1,370	1,320	-				
Hotel Surcharge (per room per night): 21-24Mar17 Twin HKD560, Single HKD610												

- Not valid for Japan, China and Taiwan Market / - Surcharge may impose during high season period

Taipei 台北

3-Day / 2-Night Package

Validity: 16Dec16-31Mar17

\$1,580^{up}



Accommodation	Room Type	Period of stay	Breakfast	Adult			Child	Extension (per room night)			Public Transport / Location
				Twin Share	Single	Extra Bed	Extra Bed	Twin	Single	Extra Bed	
中山區											
Okura Prestige Taipei 5* 大倉久和大飯店 http://www.okurataipei.com.tw Min. 2N stay on 30Dec16-1Jan17	菁英客房	Till 30Nov16	NO	2,900	4,670	2,200	1,990	1,900	1,900	540	捷運 中山站
		1Dec16-28Feb17	NO	2,660	4,190	2,200	1,990	1,660	1,660	540	
		Hotel Surcharge (per room per night): - 24-26Dec16 Twin HKD700, Single HKD700 - 27-29Dec16 Twin HKD260, Single HKD260 - 30Dec16-1Jan17 Twin HKD1190, Single HKD1190 - 27-31Jan17 Twin HKD310, Single HKD310									
		1-31Mar17	NO	2,950	4,770	2,200	1,990	1,950	1,950	540	
松山區											
The Sunworld Dynasty 4* 王朝大酒店 http://www.sunworlddynasty.com.tw Blackout dates: 2017 自行車展	Superior 精緻客房 (未裝修)	Till 28Feb17	NO	1,780	2,420	1,820	1,610	770	770	350	捷運 南京東路站
		Hotel Surcharge (per room per night): - 24-25Dec16, 30Dec16-1Jan17 Twin HKD240, Single HKD240 - 1Jan17, 28-31Jan17 Twin HKD300, Single HKD300									
		1-31Mar17	NO	1,850	2,570	1,820	1,610	850	850	360	
U Hotel Taipei 4* 台北有園飯店 http://www.uhotels.com.tw/ Newly Opened in Sep2015  - 位於松山區, 距離捷運站約7分鐘, 鄰近松山機場、小巨蛋及百貨公司等 - 充滿文藝氣息的全新精品酒店, 客房以草綠色和橙色為主色調, 以清新理性的色彩和新生代藝術相結合, 塑造出風格獨特的客房 Blackout dates: 27Jan-1Feb17, 22-25Mar17	Superior 綠樣客房	Till 31Dec16	YES	1,840	2,550	-	-	840	840	-	捷運 松江南京站
		Hotel Surcharge (per room per night): - Till 30Dec16 (Sat) Twin HKD60, Single HKD60 - 31Dec16 Twin HKD730, Single HKD730									
	1Jan-31Mar17	YES	1,930	2,720	-	-	930	930	-		
The Howard Plaza Hotel 5* 福華大飯店 http://taipei.howard-hotels.com.tw/ Blackout dates: 30Dec16-2Jan17, 27-31Jan17, 21-24Mar17	Standard 標準客房 (Inside Room)	Till 28Feb17	NO	1,980	2,820	-	-	970	970	-	捷運 忠孝復興站
		1-31Mar17		2,030	2,920	-	-	1,020	1,020	-	
Amba Taipei SongShan 4* 台北松山意舍酒店 https://www.amba-hotels.com/en/songshan/ Newly Opened in Jul2016	Medium 中房	Till 31Dec16	YES	2,010	2,780	-	-	1,010	960	-	捷運 松山站
		Hotel Surcharge (per room per night): - 23-30Dec16 Twin HKD100, Single HKD100 - 31Dec16 Twin HKD1260, Single HKD1210									
		1Jan-31Mar17	YES	2,050	2,770	-	-	1,050	950	-	
		Hotel Surcharge (per room per night): - 1Jan17, 28Jan-1Feb17, 21-25Mar17 Twin HKD100, Single HKD100									

- Not valid for Japan, China and Taiwan Market / - Surcharge may impose during high season period

Taipei 台北

3-Day / 2-Night Package

Validity: 16Dec16-31Mar17

\$1,580^{up}



Accommodation	Room Type	Period of stay	Breakfast	Adult			Child	Extension (per room night)			Public Transport / Location		
				Twin Share	Single	Extra Bed	Extra Bed	Twin	Single	Extra Bed			
松山區													
Hotel Cozzi Minsheng 4* 和逸台北民生館 http://www.hotelcozzi.com/minsheng Blackout dates: 31Dec16	舒適客房	Till 28Feb17	YES	2,150	3,170	-	-	1,150	1,150	-	捷運 行天宮站		
		Hotel Surcharge (per room per night): - 1Jan17, 28-31Jan17 Twin HKD770, Single HKD770											
The Sherwood Taipei 5* 台北西華飯店 http://www.sherwood.com.tw/ Blackout dates: 30Dec16-2Jan17	ROH-Deluxe 豪華客房	Till 11Dec16, 23Dec16-28Feb17	YES	2,320	3,500	2,290	2,080	1,320	1,320	590	捷運 中山國中站		
		12-22Dec16	YES	2,200	3,260	2,270	2,060	1,200	1,200	580			
		1-31Mar17		2,540	3,750	2,290	2,080	1,540	1,440	590			
Hotel Surcharge (per room per night): - 1-16Mar17, 24-31Mar17 (Mon-Thu) & 17-20Mar17 Twin HKD100, Single HKD90 - 21-23Mar17 Twin HKD460, Single HKD460													
Taipei Marriott Hotel 5* 台北萬豪酒店 http://www.marriott.com/hotels/travel/tpetm-taipei-marriott-hotel/ Blackout dates: 30Dec16-1Jan17 Newly Opened in 17Aug2015	Superior	Till 29Dec16, 2Jan-6Mar17	NO	3,010	4,890	2,280	2,070	2,010	2,010	590	捷運 劍南路站		
		7-31Mar17		2,880	4,620	2,280	2,070	1,880	1,880	590			
信義區													
Home Hotel 4* http://www.homehotel.com.tw Blackout dates: 30Dec16-1Jan17	原創客房	Till 31Dec16, 1Feb-31Mar17	YES	2,320	3,500	1,810	1,600	1,320	1,320	350	捷運 市政府站		
		1-31Jan17		2,270	3,410	1,810	1,600	1,270	1,270	350			
Grand Hyatt Taipei 5* 台北君悅大飯店 http://taipei.grand.hyatt.com/ Blackout dates: 30Dec16-1Jan17	Grand Room 君悅客房	Till 31Mar17	NO	2,950	4,770	-	-	1,950	1,950	-	捷運 市政府站		
Humble House 5* 寒舍艾麗酒店 http://humblehousehotels.com/	ROH (舒適 / 精緻客房)	Till 11Dec16, 1-31Mar17	NO	2,560	3,990	-	-	1,560	1,560	-	捷運 市政府站		
		Hotel Surcharge (per room per night): 22-25Mar17 Twin HKD240, Single HKD240											
		12Dec16-28Feb17	NO	2,470	3,800	-	-	1,460	1,460	-			
Hotel Surcharge (per room per night): - 23-25Dec16, 28-31Jan17 Twin HKD340, Single HKD340 - 29-30Dec16, 1Jan17 Twin HKD920, Single HKD920 - 31Dec16 Twin HKD1680, Single HKD1680 - 27Jan17 Twin HKD120, Single HKD120													
南港區													
Courtyard Marriott Taipei 4* 台北六福萬怡酒店 https://www.marriott.com/hotels/travel/tpccy-courtyard-taipei/ Blackout dates: 30-31Dec16 Newly Opened in 15Dec2015	Superior 卓越客房	Till 30Dec16	NO	2,510	3,880	-	-	1,510	1,510	-	捷運 南港車站		
		Hotel Surcharge (per room per night): - Till 30Nov16 (Mon-Thu) Twin HKD100, Single HKD100											
士林區													
Tango Inn - Taipei JiHe 3* 天雲旅棧 - 台北基河館 http://jh.tangoinn.com.tw/index.php Newly Opened in Feb2016	ROH (Double Bed)	Till 31Dec16	NO	1,690	2,240	-	-	680	680	-	捷運 南港車站		
Hotel Surcharge (per room per night): - Till 31Dec16 (Mon-Thu) Twin HKD220, Single HKD220													

- Not valid for Japan, China and Taiwan Market / - Surcharge may impose during high season period

Taipei 台北

3-Day / 2-Night Package

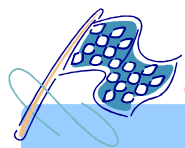
Validity: 16Dec16-31Mar17

\$1,580^{up}



自選 溫泉旅館

地區	溫泉旅館	售價
陽明山	Landis Resort 陽明山中國麗緻 http://www.landisresort.com.tw/	HKD 1,030 起
	Tien Lai Spring Resort 天籟溫泉會館 http://www.tienlai.com.tw/	
	9 Plus Spa Hotspring Hotel 荷豐館溫泉渡假飯店 http://www.lotusspa.com.tw/	
北投	Spring City Resort 春天酒店 http://www.springresort.com.tw/ <房內溫泉>	HKD 880 起
	Radium Kagaya Resort Hotel 日勝生加賀屋國際溫泉飯店 http://www.kagaya.com.tw/ <房內溫泉>	
	Call Me garden 可米花園溫泉會館 www.callme-garden.com.tw	
烏來	Pause Landis Resort 璞石麗緻溫泉會館 http://www.pauselandis.com.tw/	HKD 780 起
	Volandourai Spa & Resort Hotel 馥蘭朵渡假酒店 http://www.springparkhotel.com.tw/	
	Hotel not accept child under 12yrs old	



自選 台北一日遊

天天出發, 2人成行, 集合/解散地點: 酒店大堂

適用日期: 即日起至2017年3月31日

主題行程	行程路線	售價
相約九份、十分 全程時間: 約9小時	平溪 / 菁桐 / 十分 (任擇其一) → 九份山城老街 → 黃金博物館區巡禮 → 黃金瀑布 + 陰陽海 + 十三層遺址 → 基隆廟口夜市	HKD 350 / 人
暢遊三鶯、大溪 全程時間: 約8小時	大溪花海農場 → 鶯歌陶瓷博物館(自費門票) + 老街 (可自費DIY手拉杯) → 三峽老街 → 三峽傳統藝術DIY體驗	HKD 400 / 人
發現蘭陽 全程時間: 約9小時	蘭陽博物館(自費門票) + 烏石港 → 金車威士忌酒莊 + 金車技蘭花園 → 八甲魚場 → 國立傳統藝術中心 → 羅東夜市 → 住宿酒店	HKD 450 / 人

- 以上行程已包車費、路費、指定景點門票, 不包膳食及司機小費(建議司機小費新台幣100/人)
- 以上行程需與其他乘客拼車
- 行程內容可能會因應當時情況或有所調動, 最後會以當地代理安排為準



自選 機場專車接送 / 本島包車

適用日期: 即日起至2017年3月31日

行程	4人橋車	8人座車
機場 ↔ 台北市內酒店 (含北投)	HKD 280 / 程	HKD 380 / 程
台灣本島包車(包車每次最少3小時起)	HKD 175 / 小時	HKD 225 / 小時

- 建議三人或以上(連行李)選用8人座車
- 報價以同一地點上/下車為準
- 接機時間為航班到達一小時內, 超過一小時需另繳付加費
- 夜間時段為每晚 22:00 至翌日清晨 06:00, 需另加付加費每小時\$50

Taipei 台北

3-Day / 2-Night Package

Validity: 16Dec16-31Mar17

\$1,580^{up}



Please state "CX/KA GV2 fare IN (date) OUT (date) at (hotel name)" at OSI field in PNR.

Air Fare Surcharge for High Season & Upsell Class

Date	Flights Restrictions	Ticket validity	Class(GV2)	Adult	Child
HKG-CX,KA-TPE-CX,KA-HKG or v.v. HKG-CX,KA-TPE//KHH,RMQ-CX,KA-HKG or v.v.					
16-21Dec16, 28-29Dec16, 1-25Jan17, 3Feb-30Mar17	HKG/TPE valid on CX496/494/564/466/472/400/408 & TPE/HKG valid on CX463/471/475/495/405/401/409/451/KA487/483 HKG/KHH valid on KA452/442/440/436/450 & KHH/HKG valid on KA453/443/441/457 HKG/RMQ valid on KA490 & RMQ/HKG valid on KA491	2-7 days	Q	NIL	NIL
16-21Dec16, 28-29Dec16, 1-25Jan17, 3Feb-30Mar17	HKG/TPE valid on CX496/450/494/406/564/466/472/400/408/KA486/482 & TPE/HKG valid on CX463/471/475/495/405/401/409/451/531/KA487/483 HKG/KHH valid on KA452/432/440/442/436/450 & KHH/HKG valid on KA451/453/433/441/443/437/457 HKG/RMQ valid on KA490 & RMQ/HKG valid on KA491	2-7 days	N	170	120
16-21Dec16, 28-29Dec16, 1-25Jan17, 3Feb-30Mar17	HKG/TPE valid on CX496/450/494/406/564/466/472/400/408 or KA5496/5450/5494/5406/5564/5466/5472/5400/5408 or KA operating flights or CX codeshare flights operated by KA TPE/HKG valid on CX463/471/475/495/405/473/401/409/451/531 or KA5463/5471/5475/5495/5405/5473/5401/5409/5451/5531 or KA operating flights or CX codeshare flights operated by KA HKG/KHH valid on CX5452/5432/5442/5440/5436/5450 or KA452/432/442/440/436/450 KHH/HKG valid on valid on CX5451/5453/5433/5443/5441/5437/5457 or KA451/453/433/443/441/437/457 HKG/RMQ valid on CX5490 or KA490 & RMQ/HKG valid on CX5491 or KA491	2-7 days	N	310	230
16-21Dec16, 28-29Dec16, 1-25Jan17, 3Feb-30Mar17	HKG/TPE <u>NOT</u> valid on CX474/KA5474	2-7 days	N (GV1)	570	420
16-21Dec16, 28-29Dec16, 1-25Jan17, 3Feb-30Mar17	HKG-CX,KA-TPE-CX,KA-HKG or v.v. HKG-CX,KA-TPE//KHH,RMQ-CX,KA-HKG or v.v.	2-7 days (extended to 14days surcharge HK\$500/person)	V	890*	660*
22-27Dec16, 30-31Dec16, 31Mar17			L	1,230	920
26Jan-2Feb17			M	1,810	1,350
* Low season upselling from V-class to L-class is permitted at ADDITIONAL HKD100 per sector					
Premium Economy Air Fare Surcharge					
16-21Dec16, 28-29Dec16, 1-25Jan17, 3Feb-30Mar17	HKG-CX-TPE-CX-HKG or v.v.	2-7 days	E	1,110	830
22-27Dec16, 30-31Dec16, 31Mar17				1,910	1,430
26Jan-2Feb17				2,210	1,650
16-21Dec16, 28-29Dec16, 1-25Jan17, 3Feb-30Mar17	HKG-CX-TPE-CX-HKG or v.v.	2-7 days (extended to 14days surcharge HK\$500/person)	E	1,950	1,460
22-27Dec16, 30-31Dec16, 31Mar17				2,290	1,710
26Jan-2Feb17				2,870	2,150
Business Class Air Fare Surcharge					
16-21Dec16, 28-29Dec16, 1-25Jan17, 3Feb-30Mar17	HKG-CX,KA-TPE-CX,KA-HKG or v.v. HKG-CX,KA-TPE//KHH,RMQ-CX,KA-HKG or v.v.	2-7 days	I	1,710	1,280
22-27Dec16, 30-31Dec16, 31Mar17				2,410	1,800
26Jan-2Feb17				2,710	2,030
16-21Dec16, 28-29Dec16, 1-25Jan17, 3Feb-30Mar17	HKG-KA-TPE-KA-HKG	2-7 days	D	2,430	1,820
16-21Dec16, 28Dec16-25Jan17, 3Feb-31Mar17	HKG-CX,KA-TPE-CX,KA-HKG or v.v. HKG-CX,KA-TPE//KHH,RMQ-CX,KA-HKG or v.v.	2-7 days (extended to 14days surcharge HK\$500/person)	D	2,670	2,000
22-27Dec16, 26Jan-2Feb17				3,870	2,900

Taipei 台北

3-Day / 2-Night Package

Validity: 16Dec16-31Mar17

\$1,580^{up}



以上價格包括:

- 國泰/國泰港龍航空來回香港至台北經濟客位機票(電子機票)
- 2 晚住宿於自選酒店
- 每天酒店早餐(只限指定酒店)
- 飛行保險港幣 1,000,000 元 (最多 14 天)
- 香港機場保安稅
- 0.15% 旅遊業議會印花稅

備註:

- 訂位代號/機票有效期: (請參閱上列附加費表)
- 適用於 CX/KA 營運航班 / 累積飛行哩數之訂位代號請瀏覽 www.asiamiles.com
- 酒店住宿必須於 17 年 3 月 31 日或之前完成。(特別註明除外)
- 最少兩人(支付成人價錢)同行, 所有同行客人之行程、航班必須相同(於同一電腦代號(PNR)內訂位), 並必須於去程及回程時一同辦理登機手續。
- 以上價錢於旺季及交易會期間或需繳付附加費。
- 如只預訂房間或作不連續住宿, 酒店價目及條款或會有所調整及變動。
- 傳單上所列明的交通訊息或時間(例:航班/車次)如有任何更改, 均以官方資訊為準, 恕不另行通知。
- 旅遊套餐不得更改航班 / 日期 / 行程及不可退款。
- 以上價格不包括所有有關稅項及附加費。價格如有任何變更恕不另行通知。